

# LBAC's Family Calendar & Events

## Sunday, July 8

- 9:00AM Morning Coffee
- 9:30AM Worship & Celebration Service
- 12:15PM Deacon Meeting
- 3:00PM LBAC Dodgers vs. Angels Tailgate Party
- 5:00PM LBAC Dodgers vs. Angels Gametime

## MISSIONS

<http://www.lbac.org/missions>

## GROWTH GROUPS

<http://www.lbac.org/gg>

Mid-week Bible Studies for all Adults

## CHILDREN'S MINISTRIES

<http://www.lbac.org/children>

## Sunday Mornings

Gospel Project @ 9:30AM

Fun-N-Funky Hour (Summer Break)

## AWANA

<http://www.lbac.org/awana>

Wednesdays through May (Summer Break)

## YOUTH MINISTRIES

<http://www.lbac.org/youth>

JH & HS Foundations - Sundays (Summer Break)

The Deep (Study) - Tuesdays @ 7:00PM

Summer Youth Group - Thursdays @ 7:00PM

## WOMEN'S MINISTRIES

<http://www.lbac.org/women>

## Woman To Woman Mentoring

Contact: sherylnnelbac@gmail.com

## Lydia House Meals Ministry

Contact: robbi@apabrandu.com

## Women Connecting with Missions

3<sup>rd</sup> Tuesday of each month @ 7:00PM

## Crafty Women

2<sup>nd</sup> Saturday of each month @ 10:00AM

## MEN'S MINISTRIES

<http://www.lbac.org/men>

Contact: mensministry@lbac.org

## Monday, July 9

- 8:45AM Vacation Bible School (8:30AM Doors Open)
- 6:00PM Compulsive Eaters Anonymous

## Tuesday, July 10

- 8:45AM Vacation Bible School (8:30AM Doors Open)

## Wednesday, July 11

- 8:45AM Vacation Bible School (8:30AM Doors Open)

## Thursday, July 12

- 8:45AM Vacation Bible School (8:30AM Doors Open)

## Friday, July 13

- 8:45AM Vacation Bible School (8:30AM Doors Open)
- 8:00PM Narcotics Anonymous

## Saturday, July 14

- 8:00AM Men's Fellowship Breakfast
- 9:00AM Compulsive Eaters Anonymous

## Sunday, July 15

- 9:00AM Morning Coffee
- 9:30AM Worship & Celebration Service

## long beach alliance church offices

3331 palo verde avenue • long beach, ca • 90808-4113  
phone: 562.420.1478 • [office@lbac.org](mailto:office@lbac.org) • [www.lbac.org](http://www.lbac.org)

[www.facebook.com/longbeachalliancechurch](http://www.facebook.com/longbeachalliancechurch)

church office hours: tuesday-thursday, 10:00AM-5:00PM

## church staff team

michelle crammer, office manager  
ext. 1004 • [michelle@lbac.org](mailto:michelle@lbac.org)

chris lankford, lead pastor  
ext. 1001 • [chris@lbac.org](mailto:chris@lbac.org)

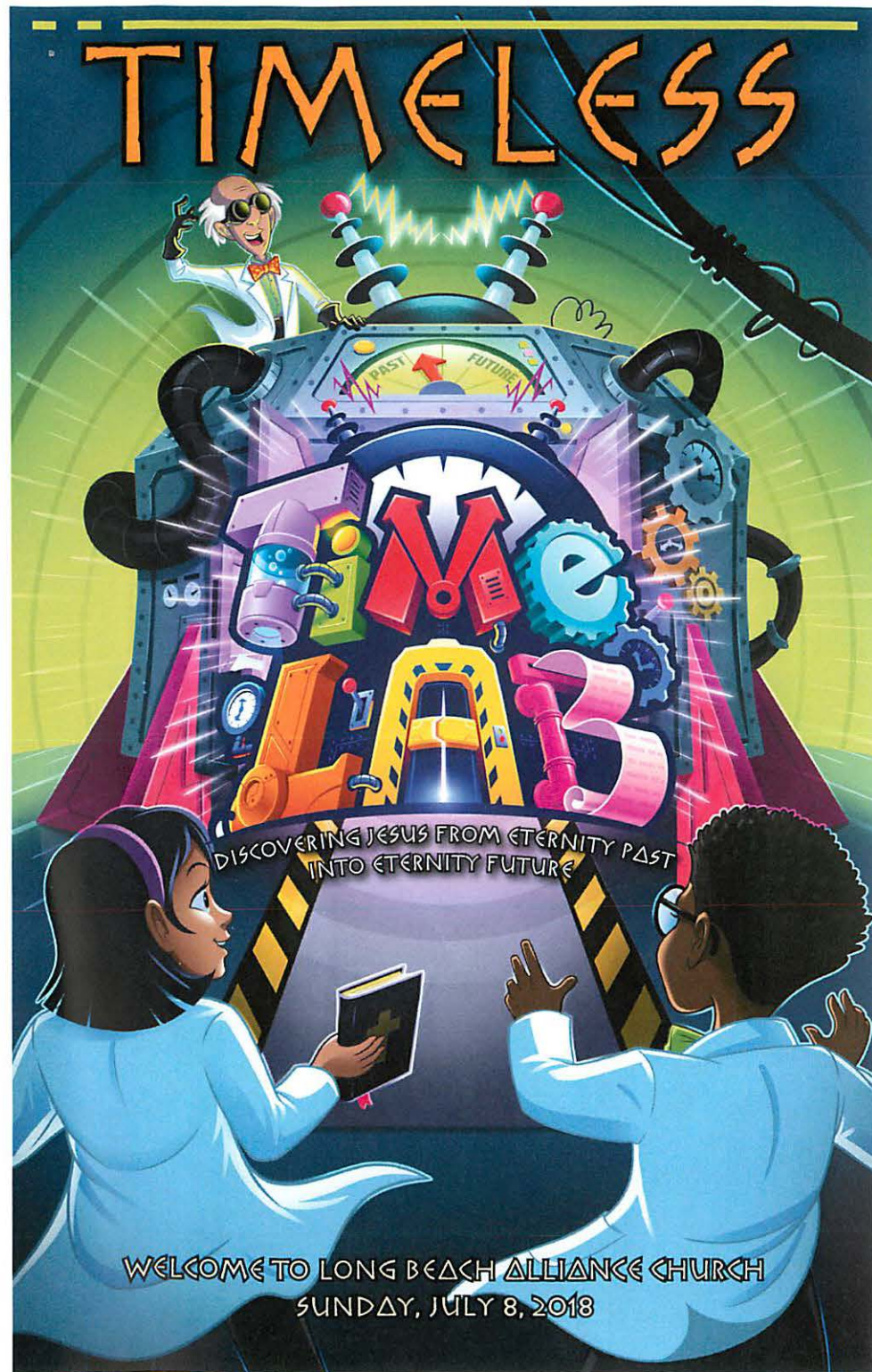
ben shaw, worship & celebration intern  
[ben@lbac.org](mailto:ben@lbac.org)

jesse duckett, youth pastor  
ext. 1005 • [jesse@lbac.org](mailto:jesse@lbac.org)

tina rand, receptionist & treasurer  
exts. 1000 & 1006 • [tina@lbac.org](mailto:tina@lbac.org)

scott trickett, associate pastor  
ext. 1002 • [scott@lbac.org](mailto:scott@lbac.org)

Regular Ministry Schedule & Contacts





# ANGELS VS. DODGERS RIVALRY SERIES

Today, July 8!



VS



Tailgate Party (under the Big A) • Begins @ 3:00PM

Food & Drink Provided • Game Time @ 5:00PM

Got Questions? Visit the Men's Courtyard Table or Call John Moses @ 562.755.0920

## Men's Breakfast

FREE! All Men Invited!

Saturday, July 14

8:00AM • LBAC Gymnasium

Got Questions? Visit the Men's Courtyard Table or Call Greg Coles @ 310.293.9518

## LBAC Year-to-Date Financial Report

	<u>Budget</u>	<u>Received</u>	<u>Budget %</u>
Weekly:	\$12,041.97	\$7,099.10	59.0%
Month-to-Date:	\$12,041.97	\$7,099.10	59.0%
Year-to-Date:	\$529,846.68	\$509,241.02	96.1%
Disbursed YTD: \$520,196.00 GOF Balance: <b>-\$10,954.98</b>			

## IS HEAVEN FOR REAL?

Long Beach Alliance Church • July 8, 2018 • Pastor Kris Lankford

### 1) THE RELATABLE JESUS FROM NAZARETH

What do you think of when you think about Jesus? Most of us think about the Jesus we can relate to, the guy from Nazareth who grew up as the oldest son of Mary & Joseph and had a bunch of siblings.

Like most people, you might relate to Jesus suffering in the Garden of Gethsemane, earnestly praying and sweating through his anxiety and struggles (Luke 22:39-46).

Maybe, like a lot of others, you picture Jesus as the mocked and beaten sacrifice for your sins; falsely accused, tragically convicted, and brutally executed by crucifixion (Matthew 27:26-31).

Of course, these pictures of Christ's life here on earth are accurate! However, like looking at a picture of yourself from many years ago, they recall something from your past which is only a shadow (sometimes quite dim) of the present. This is also true of Jesus Christ!

### 2) THE UNBELIEVABLE CHRIST OF TODAY

Once Jesus returned to Heaven in the clouds (Acts 1:9), all the divine qualities which He had set aside (Philippians 2:5-8) in order to be like you and me "in every respect" (Hebrews 2:17-18) were taken back by Jesus, a return to Jesus' full heavenly glory (John 17:5).

It's important to recognize that Jesus the Son provides us an earthly example of how to have an authentic relationship with God the Father (Hebrews 4:14-16). But, like an old snapshot, we should also see Jesus as He is today, to make sure we know Him as He truly is right now!

With this in mind, John, the writer of "the Revelation of Jesus Christ" provides us with a vivid snapshot of Jesus Christ standing in the midst of his future bride, the church (Revelation 1:12-20).

A relatable Jesus is indispensable for our faith. But a victorious Jesus of Revelation? That's the Jesus of today, the Jesus you and I need to face tomorrow, and the Jesus we must see "face-to-face" in order to live lives of victory in the love of Jesus Christ our Lord (Romans 8:31-39).