

# LBAC's Family Calendar & Events

## Sunday, May 12

9:00AM Morning Coffee  
9:30AM Worship & Celebration

## Monday, May 13

6:00PM Compulsive Eaters Anonymous  
7:00PM Pure Desire  
7:00PM Survivors of Incest Anonymous

## Tuesday, May 14

7:00PM The Process \* High School

## Wednesday, May 15

6:30PM AWANA

## Thursday, May 16

5:00PM Lydia House Women's Outreach  
7:00PM Junior High \* Live

## Friday, May 17

6:30AM Men's Bible Study  
8:00PM Narcotics Anonymous

## Saturday, May 18

9:00AM Compulsive Eaters Anonymous

## Sunday, May 19

9:00AM Morning Coffee  
9:30AM Worship & Celebration  
12:15PM Deacon Meeting  
6:00PM Youth Leader Meeting

### MISSIONS

<http://www.lbac.org/missions>

### GROWTH GROUPS

<http://www.lbac.org/gg>

Mid-week Bible Studies for all Adults

### CHILDREN'S MINISTRIES

<http://www.lbac.org/children>

Sunday Mornings

Gospel Project @ 9:30AM

### AWANA

<http://www.lbac.org/awana>

Wednesday Nights through May

### YOUTH MINISTRIES

<http://www.lbac.org/youth>

The Process High School - Tuesdays @ 7:00PM  
Junior High Live - Thursdays @ 7:00PM

### WOMEN'S MINISTRIES

<http://www.lbac.org/women>

Woman To Woman Mentoring

Contact: sherylnnelbac@gmail.com

Lydia House Meals Ministry

Contact: mcoliver789@msn.com

Women Connecting with Missions

3<sup>rd</sup> Tuesday of each month @ 7:00PM

Crafty Women

2<sup>nd</sup> Saturday of each month @ 10:00AM

### MEN'S MINISTRIES

<http://www.lbac.org/men>

Contact: mensministry@lbac.org

## long beach alliance church offices

3331 palo verde avenue • long beach, ca • 90808-4113

phone: 562.420.1478 • office@lbac.org • www.lbac.org

church office hours: tuesday-thursday, 10:00AM-5:00PM

[www.facebook.com/longbeachalliancechurch](http://www.facebook.com/longbeachalliancechurch)

## church staff team

meghan brearley, children's director  
562.708.9261 • megan@lbac.org

jesse duckett, youth pastor  
562.454.7122 • jesse@lbac.org

tina rand, receptionist & treasurer  
562.420.1478 • tina@lbac.org

scott trickett, associate pastor  
562.972.5306 • scott@lbac.org

michelle crammer, office manager  
917.288.3424 • michelle@lbac.org

chris lankford, lead pastor  
562.685.4132 • chris@lbac.org

kyle rand, facility needs  
562.900.0921 • kyle@lbac.org

ben shaw, worship & celebration intern  
562.420.1478 • ben@lbac.org

Weekly Schedule

Regular Ministry Schedule & Contacts

# BIBLICAL FORMATION

WELCOME TO LONG BEACH ALLIANCE CHURCH  
MAY 12, 2019



## MARK THE DATE

Coming Soon

Nominating the Nominating Committee Meeting

Sunday, June 2

immediately after service

## LBAC Crafty Women

Saturday, May 18

10AM to 4PM

Contact Donna Neel  
[donna@neel.com](mailto:donna@neel.com)

## VBS LEADERS WANTED



## POWER UP

RAISE YOUR GAME

Vacation Bible School will be July 8-12, 2019. We need all hands on deck for one of LBAC's biggest events! There are ways for everyone to get involved!

Please consider volunteering for VBS this year!

Register as a volunteer at [www.lbac.org](http://www.lbac.org).

Questions? Contact Meghan Brearley 562.708.9261 or [meghan@lbac.org](mailto:meghan@lbac.org)



## POWER UP

## VBS 2019

July 8-12

QUESTIONS?  
[meghan@lbac.org](mailto:meghan@lbac.org)  
 562.708.9261

[www.lbac.org/vbs](http://www.lbac.org/vbs)

REGISTER TODAY!!!

## LBAC Year-to-Date Financial Report

	Budget	Received	Budget %
Weekly:	\$11,977.03	\$15,517.73	129.6%
Month-to-Date:	\$11,977.03	\$15,517.73	129.6%
Year-to-Date:	\$431,173.08	\$466,068.19	108.1%
Disbursed YTD:	\$457,677.00	GOF Balance: \$8,391.19	

# Biblical Formation

LONG BEACH ALLIANCE CHURCH \* MAY 12, 2019 \* PASTOR CHRIS LANKFORD

## 1) *Faith in Christ Leads to Authentic Obedience*

- A. TRUE SAVING FAITH IN JESUS CHRIST (EPHESIANS 2:8-9) IS AUTHENTICATED BY AN INCREASINGLY OBEDIENT LIFE (1 JOHN 2:3-6) OF OVERCOMING FLESHLY PASSIONS (TITUS 2:11-14; 1 JOHN 5:3-5) AND DARK WORLDLY DESIRES (1 JOHN 1:5-10, 2:15-18).
- B. TRUE SAVING FAITH IN JESUS CHRIST IS AUTHENTICATED BY LOVE (1 JOHN 4:7-11). WE LIVE LIKE JESUS CHRIST WHEN WE ENCOURAGE ONE ANOTHER TOWARD AN OBEDIENT LIFE BY MEANS OF LOVE (1 JOHN 4:18-21, HEBREWS 10:24).
- C. IN THE SAME WAY THAT JESUS CHRIST HUMBLING HIMSELF AND SERVED OTHERS, WE LIVE IN A LIKE MANNER (PHILIPPIANS 2:3-8), AMBASSADORS OF FORGIVENESS AND RECONCILIATION BY MEANS OF LOVE (2 CORINTHIANS 5:14-21).
- D. THE OBEDIENT LIFE IN CHRIST IS NOT BURDENSOME (1 JOHN 5:3) BECAUSE WE ARE SEALED AND PROTECTED BY THE SPIRIT OF GOD (1 JOHN 3:23-4:4 & 13). WITH THE FEAR OF FAILURE REMOVED BECAUSE OF LOVE (1 JOHN 4:18) WE GROW IN OUR FAITHFULNESS TO GOD AND IN OUR LOVE FOR OTHERS (2 THESSALONIANS 1:3-4).

## 2) *Authentic Obedience is Biblically Formed*

- A. GOD'S HOLY SPIRIT SEALS/PROTECTS CHRIST-FOLLOWERS (EPHESIANS 1:13-14, 4:30), TEACHING OBEDIENCE TO GOD'S WORD (JOHN 14:26, 16:13-14). THE HOLY SPIRIT'S MINISTRY SANCTIFIES (MAKES HOLY) THE FOLLOWER OF JESUS CHRIST THROUGH THE WORD OF GOD (JOHN 17:15-19), MAKING KNOWN GOD'S LOVE (JOHN 17:26).
- B. READING AND UNDERSTANDING GOD'S WORD (THE BIBLE) IS THE VEHICLE (2 TIMOTHY 3:16-17) BY WHICH HOLY SPIRIT DELIVERS NEW SPIRITUAL PASSIONS AND FRESH DESIRES INTO THE LIFE OF THE BELIEVER IN ORDER TO FULFILL GOD'S RIGHTEOUS PURPOSES (GALATIANS 5:16-25; COLOSSIANS 3:1-2, 10-17; 1 PETER 1:22-25).
- C. AS CHRIST FOLLOWERS, GOD'S WORD HAS UNIQUE SIGNIFICANCE (1 THESSALONIANS 2:13; 2 PETER 1:19-21) LEADING TO ONGOING PROGRESS IN OUR SPIRITUAL LIVES (HEBREWS 4:12-13). THE SPIRIT APPLIES GOD'S WORD, PROGRESSIVELY TRANSFORMING OUR LIVES TO BE MORE LIKE JESUS CHRIST (2 CORINTHIANS 3:17-18).
- D. AUTHENTIC OBEDIENCE COMES THROUGH PROGRESSIVE FORMATION OF OUR LIVES (ROMANS 12:1-2) BY THE WORD OF GOD AND THE ONGOING MINISTRY OF SPIRITUAL FORMATION BY THE HOLY SPIRIT (1 CORINTHIANS 2:10-13; ROMANS 8:28-30).

# Growth Group Guide

## Biblical Formation

WEEK #3 . SANCTIFICATION #3

### Ice Breaker

When did you get your first Bible? What do you remember about it? What became of it?

### In-Depth

- **Discuss what you learned from this week's sermon**

#### 1. Sanctification (Again)

A. Read 1 John 2:1-6; 3:23-24; 4:13-17. What does it mean to “abide”? How do we abide in God? How does he abide in us?

B. Read 1 Corinthians 2:10-13; John 14:26; John 16:13-14. What is the role of the Holy Spirit in our sanctification?

#### 2. Sanctification & God's Word

A. Read 2 Timothy 3:15-17; Hebrews 4:12-13; Psalm 119:105. In what ways does God's Word help us in our Christian walk (describe at least three)?

B. Read Psalm 1:1-2; Psalm 119:47-48; Acts 17:11. Can we learn to love God's Word? What does love of God's Word look like in a Christian?

## *Making it Relevant*

Read Colossians 3:12-17. For each verse in this passage:

(1) Summarize its commands, and

(2) Describe at least one way you can improve in this area

A. Verse 12:

B. Verse 13:

C. Verse 14:

D. Verse 15:

E. Verse 16:

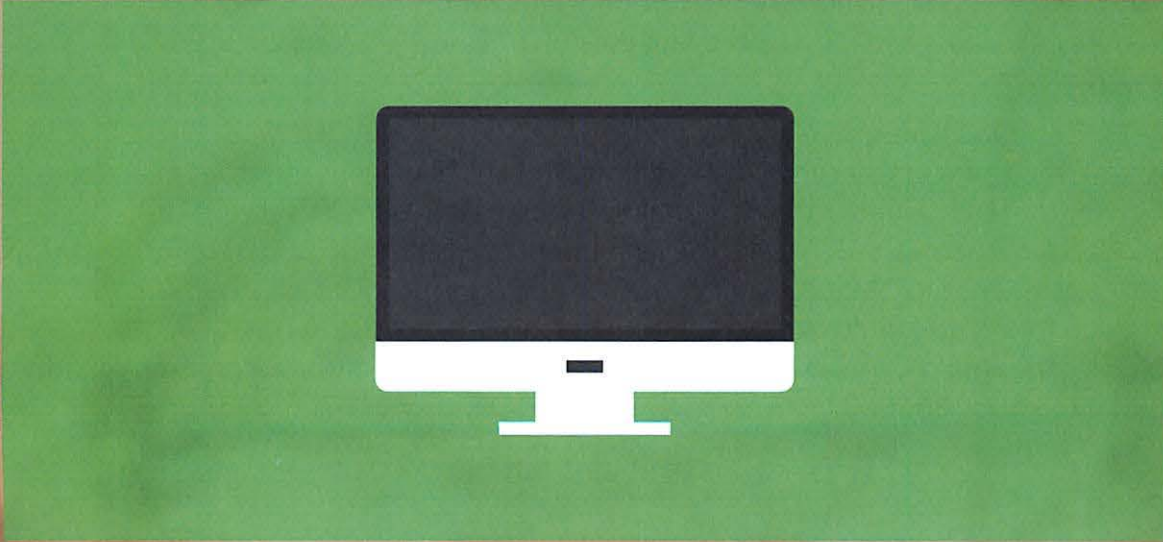
F. Verse 17:

# Now Offering Online Giving

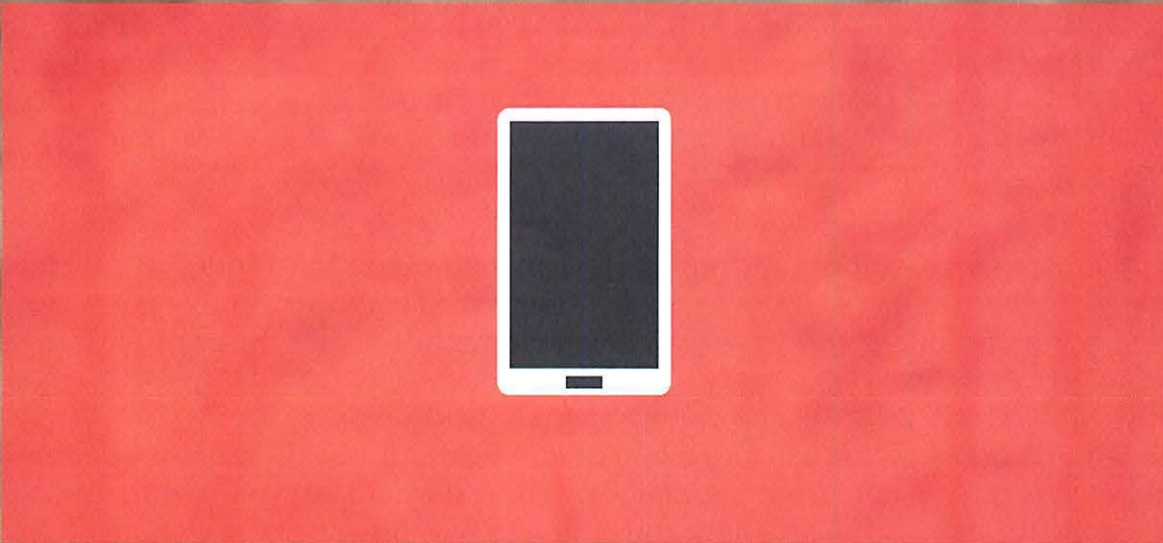
*However God calls you to faithfully give, we make it simple.*

---

A New Way to Give: Online



On Our Church Website  
[www.lbac.org](http://www.lbac.org)



Through the Mobile  
Giving App

***If you need assistance, please stop by our LBAC Offices or  
Contact Tina Rand at 562.420.1478 or [tina@lbac.org](mailto:tina@lbac.org)***

# Mobile Giving Guides

## For iOS Devices

### Getting Started:

- Launch the app store from your device and search for our app.
- Make sure your location services are turned ON. When you launch the app, you can search for your organization by typing “Long Beach Alliance Church” and/or zip code, or choose to search for organizations near you.
- Login or create a donor profile to give to your organization.
- Once logged in, make a donation by tapping the “Give” icon.

### Giving a Donation:

- Enter your donation amount.
- Choose your recurrence. You can give a one-time, weekly, bi-weekly, monthly, quarterly, or annual gift. Choose from the calendar the date that you would like your gift submitted.
- Select your payment method. To add a new payment method, tap “Add Debit or Credit Card” to add card information, or tap “Add Bank Account” to add bank account information.
- Select which fund you would like to donation to from the drop down list.
- If enabled by the church, you also have the option to type an additional comment or add the cost of processing to your donation.
- Tap “Give!” to process your donation.

## For Android Devices

### Getting Started:

- Launch the app store from your device and search for our app.
- Make sure your location services are turned ON. When you launch the app, you can search for your organization by typing “Long Beach Alliance Church” and/or zip code, or choose to search for organizations near you.
- Login or create a donor profile to give to your organization.
- Once logged in, make a donation by tapping the “+” icon.

### Giving a Donation:

- Enter your donation amount.
- Select your payment method. Tap “Add new payment method” and add your card information and billing details or use the “Quick Scan” feature to scan your card. You can also input your bank account and routing number as your payment method if your organization is accepting ACH/eCheck Donations.
- Select which fund you would like to donate to from the drop down list.
- Choose your recurrence. You can give a one-time, weekly, bi-weekly, monthly, quarterly, or annual gift. Choose the date from the calendar that you would like your gift to be submitted.
- If enabled by the church, you also have the option to type an additional comment or add the cost of processing to your donation.
- Tap “Give!” to process your donation.

### Donating to Multiple Funds:

Using our Giving Tools, donating to multiple funds has never been easier:

- Login to giving link/create an account
- Navigate to the box for adding additional funds.
- Dropdown – Choose fund

It's that easy!