

LBAC's Family Calendar & Events

Sunday, May 5

- 9:00AM Morning Coffee
- 9:30AM Worship & Celebration
- 11:00AM Third Way Community Launch
- 4:00PM Health Talk

Monday, May 6

- 6:00PM Compulsive Eaters Anonymous
- 7:00PM Pure Desire
- 7:00PM Survivors of Incest Anonymous

Tuesday, May 7

- 7:00PM Governing Board Meeting
- 7:00PM The Process ✳ High School

Wednesday, May 8

- 6:30PM AWANA

Thursday, May 9

- 7:00PM Junior High ✳ Live

Friday, May 10

- 6:30AM Men's Bible Study
- 8:00PM Narcotics Anonymous

Saturday, May 11

- 8:00AM Men's Breakfast
- 9:00AM Compulsive Eaters Anonymous
- 11:00AM Women's Ministry Tea

Sunday, May 12

- 9:00AM Morning Coffee
- 9:30AM Worship & Celebration
- 6:00PM Youth Leader Meeting

MISSIONS

<http://www.lbac.org/missions>

GROWTH GROUPS

<http://www.lbac.org/gg>

Mid-week Bible Studies for all Adults

CHILDREN'S MINISTRIES

<http://www.lbac.org/children>

Sunday Mornings

Gospel Project @ 9:30AM

AWANA

<http://www.lbac.org/awana>

Wednesday Nights through May

YOUTH MINISTRIES

<http://www.lbac.org/youth>

The Process High School ~ Tuesdays @ 7:00PM

Junior High Live ~ Thursdays @ 7:00PM

WOMEN'S MINISTRIES

<http://www.lbac.org/women>

Woman To Woman Mentoring

Contact: sherylannelbac@gmail.com

Lydia House Meals Ministry

Contact: mcoliver789@msn.com

Women Connecting with Missions

3rd Tuesday of each month @ 7:00PM

Crafty Women

2nd Saturday of each month @ 10:00AM

MEN'S MINISTRIES

<http://www.lbac.org/men>

Contact: mensministry@lbac.org

long beach alliance church offices

3331 palo verde avenue · long beach, ca · 90808-4113

phone: 562.420.1478 · office@lbac.org · www.lbac.org

church office hours: tuesday-thursday, 10:00AM-5:00PM

www.facebook.com/longbeachalliancechurch

church staff team

meghan brearley, children's director
562.708.9261 • meghan@lbac.org

jesse duckett, youth pastor
562.454.7122 • jesse@lbac.org

tina rand, receptionist & treasurer
562.420.1478 • tina@lbac.org

scott trickett, associate pastor
562.972.5306 • scott@lbac.org

michelle crammer, office manager
917.288.3424 • michelle@lbac.org

chris lankford, lead pastor
562.685.4132 • chris@lbac.org

kyle rand, facility needs
562.900.0921 • kyle@lbac.org

ben shaw, worship & celebration intern
562.420.1478 • ben@lbac.org

Weekly Schedule

Regular Ministry Schedule & Contacts

BEAUTIFUL FORMATION

WELCOME TO LONG BEACH ALLIANCE CHURCH
MAY 5, 2019

FREE MEN'S BREAKFAST

SATURDAY, MAY 11

8:00 AM CHURCH LOBBY

Got Questions? Visit the Men's Courtyard Table or Call Greg Coles @ 310.293.9518



Third Way Community

a hospitality ministry to Muslims

Join us **TODAY**, as we launch
Kelly Douglas' and Diana Burg's new ministry,
Third Way Community!

We will be praying for them and commissioning them in this church service.

There will be a reception, in the Gym, immediately following the service.
Light refreshments will be served.

POWER UP VBS 2019

July 8-12

QUESTIONS?

meghan@lbac.org

562.708.9261

www.lbac.org/vbs

REGISTER TODAY!!!

LBAC Women's Ministry presents...



Jolly Holiday Tea

MAY 11 2019

11:00AM to 1:30PM

Long Beach Alliance Church

Who: High School Seniors and Up

Tickets on Sale: April 28 and May 5

Ticket Price: \$14

If you're interested in hosting a table or have any questions

Contact: Meghan Brearley, meghan@lbac.org, Phone: 562.708.9261

LBAC Year-to-Date Financial Report

	<u>Budget</u>	<u>Received</u>	<u>Budget %</u>
Weekly:	\$11,977.03	\$10,252.33	85.6%
Month-to-Date:	\$47,908.12	\$52,866.13	110.3%
Year-to-Date:	\$419,196.05	\$450,016.46	107.4%
Disbursed YTD:	\$430,828.00	GOF Balance: \$19,188.46	

Beautiful Formation

LONG BEACH ALLIANCE CHURCH ✧ MAY 5, 2019 ✧ PASTOR CHRIS LANKFORD

1) *Can I Be Sure I Am Saved?*

- A. IN MY EXPERIENCE, A LOT OF PEOPLE QUESTION WHETHER OR NOT THEY ARE TRULY SAVED. PEOPLE WHO ARE ASKING THIS QUESTION (INCLUDING MYSELF) DO NOT SEE THE RESULTS OF BEING A CHRIST-FOLLOWER THEY KNOW THEY SHOULD SEE. SO IT CAUSES THEM TO DOUBT WHETHER OF NOT THEY ARE TRULY SAVED (JOHN 15:5-8).
- B. SOME OF US MIGHT ASK ABOUT SECURITY OF SALVATION (SOS) BECAUSE WE WANT TO KNOW "HOW FAR CAN I GO AND STILL BE OK WITH GOD?" I CONSIDER THIS THE WRONG QUESTION (SEE EPHESIANS 5:15-21) BECAUSE IT MOVES US INTO DANGEROUS OPPOSITION AGAINST GOD'S RELATIONSHIP-POSITIVE PURPOSES (EPHESIANS 5:22-33).
- C. WHILE THE "SOS" QUESTION MIGHT COME FROM A PLACE FEAR OR WEAKNESS, IT IS A GOOD QUESTION FOR US TO ASK OURSELVES (2 CORINTHIANS 13:5). DO NOT FEEL FOOLISH FOR ASKING THE QUESTION. IT WAS AN IMPORTANT CONCERN FOR THE DISCIPLES (1 JOHN 5:13) AND ALSO FOR JESUS CHRIST (MATTHEW 13:1-9, 18-23)!
- D. ACCORDING TO JESUS, WHEN THE GOOD NEWS OF THE GOSPEL IS SHARED WITH PEOPLE, SOME WILL RESPOND AND THRIVE (MATTHEW 13:1-9, 23). HOWEVER, NOT ALL WHO RESPOND AT FIRST ARE GENUINE CHRIST-FOLLOWERS (MATTHEW 13:20-22). EVERY PERSON SHOULD BEWARE THE DIRE WARNINGS AGAINST CHEAP GRACE AND EASY-BELIEVISM (HEBREWS 6:4-8; 10:26-31).
- E. ON THE ONE HAND, SALVATION IS COMPLETELY AN ACT OF GOD'S GRACE WHICH WE HAVE NOTHING TO DO WITH: WE SIMPLY RECEIVE IT IN FAITH (EPHESIANS 2:8-9). ON THE OTHER HAND, IF WE STOP THERE AND THE GOSPEL DOES NOT BRIDGE INTO OUR DAILY LIVES, HAVE WE FOOLED OURSELVES (MATTHEW 7:21-23)?
- F. THE SIMPLE ANSWER IS THAT FORGIVENESS FOR SIN IS ALWAYS AVAILABLE IN CHRIST FOR THE FAITHFUL FOLLOWER OF GOD, BUT TRUE FORGIVENESS RESULTS IN TRUE OBEDIENCE (1 JOHN 2:1-6). THESE ARE NOT IN TENSION, BUT REVEAL UNCONDITIONAL LOVE AND STEADFAST OBEDIENCE AUTHENTICATE CHRISTIANITY (1 JOHN 3:1-10).
- G. TRUE OBEDIENCE COMES THROUGH FAITH IN CHRIST, AND ASSURANCE OF SALVATION COMES THROUGH AUTHENTIC OBEDIENCE (1 JOHN 5:1-5). THIS IS THE BEAUTIFUL FORMATION WHICH GOD WORKS IN HIS CHILDREN, A FRESH AND NEW LIFE IN CHRIST (2 CORINTHIANS 5:17; TITUS 3:4-7) OF ONGOING RENEWAL (REVELATION 21:5).

Growth Group Guide

Spiritual Formation

WEEK #1 . SANCTIFICATION

Ice Breaker

What do you most enjoy about the Spring season?

In-Depth

- **Discuss what you learned from this week's sermon**

1. Sanctification (Again)

A. To refresh our memories, what does sanctification mean? What are the three phases of sanctification we discussed last week?

B. Read 2 Corinthians 3:18; Hebrews 10:14; 1 John 1:8-10. These verses talk of being transformed and made holy, yet we still sin. Is sin acceptable in the life of a Christian?

C. Read 2 Corinthians 13:5; Matthew 7:21-23; 1 Corinthians 15:1-2. How can we know we are saved when we still sin?

2. Security

A. Read Ephesians 2:8-9; Romans 6:23; 2 Timothy 8-9. Who is responsible for our salvation?

B. Read John 5:24; John 6:35-40; John 10:27-30; Romans 8:37-39. What do these verses say about our salvation?

C. Read Jude 24-25; 1 Peter 1:3-5; Romans 14:1-4; Philippians 1:6. Why can we have confidence that we will be saved?

3. Assurance

A. Read 2 Peter 1:10-11; Hebrews 10:19-23; Romans 8:15-17; Ephesians 1:13-14. What do these verses teach us about assurance of salvation?

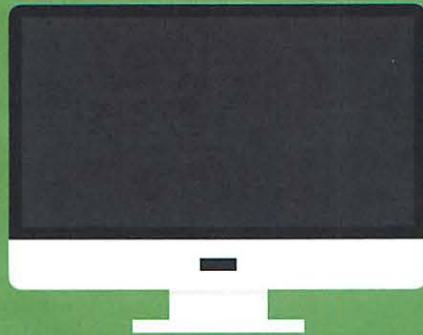
Making it Relevant

1. How can I be sure I am saved?
2. What should be our response to God's eternal security?
3. How does the assurance of salvation impact the life a believer?

Now Offering Online Giving

However God calls you to faithfully give, we make it simple.

A New Way to Give: Online



On Our Church Website

www.lbac.org



Through the Mobile
Giving App

**If you need assistance, please stop by our LBAC Offices or
Contact Tina Rand at 562.420.1478 or tina@lbac.org**

Mobile Giving Guides

For iOS Devices

Getting Started:

- Launch the app store from your device and search for our app.
- Make sure your location services are turned ON. When you launch the app, you can search for your organization by typing “Long Beach Alliance Church” and/or zip code, or choose to search for organizations near you.
- Login or create a donor profile to give to your organization.
- Once logged in, make a donation by tapping the “Give” icon.

Giving a Donation:

- Enter your donation amount.
- Choose your recurrence. You can give a one-time, weekly, bi-weekly, monthly, quarterly, or annual gift. Choose from the calendar the date that you would like your gift submitted.
- Select your payment method. To add a new payment method, tap “Add Debit or Credit Card” to add card information, or tap “Add Bank Account” to add bank account information.
- Select which fund you would like to donation to from the drop down list.
- If enabled by the church, you also have the option to type an additional comment or add the cost of processing to your donation.
- Tap “Give!” to process your donation.

For Android Devices

Getting Started:

- Launch the app store from your device and search for our app.
- Make sure your location services are turned ON. When you launch the app, you can search for your organization by typing “Long Beach Alliance Church” and/or zip code, or choose to search for organizations near you.
- Login or create a donor profile to give to your organization.
- Once logged in, make a donation by tapping the “+” icon.

Giving a Donation:

- Enter your donation amount.
- Select your payment method. Tap “Add new payment method” and add your card information and billing details or use the “Quick Scan” feature to scan your card. You can also input your bank account and routing number as your payment method if your organization is accepting ACH/eCheck Donations.
- Select which fund you would like to donate to from the drop down list.
- Choose your recurrence. You can give a one-time, weekly, bi-weekly, monthly, quarterly, or annual gift. Choose the date from the calendar that you would like your gift to be submitted.
- If enabled by the church, you also have the option to type an additional comment or add the cost of processing to your donation.
- Tap “Give!” to process your donation.

Donating to Multiple Funds:

Using our Giving Tools, donating to multiple funds has never been easier:

- Login to giving link/create an account
- Navigate to the box for adding additional funds.
- Dropdown – Choose fund

It's that easy!