

## LBAC's Family Calendar & Events

### Sunday, January 20

- 9:00AM Morning Coffee  
9:30AM Worship & Celebration Service  
11:15AM Foundations Class: Session 3 Wk3  
12:15PM Deacon Meeting

### Monday, January 21

- 6:00PM Compulsive Eaters Anonymous  
7:00PM Pure Desire

### Tuesday, January 22

- 7:00PM Elder Meeting  
7:00PM The Process High School

### Wednesday, January 23

- 6:30PM AWANA

### Thursday, January 24

- 7:00PM Junior High Live

### Friday, January 25

- 6:30AM Men's Bible Study  
8:00PM Narcotics Anonymous

### Saturday, January 26

- 9:00AM Compulsive Eaters Anonymous

### Sunday, January 27

- 9:00AM Morning Coffee  
9:30AM Worship & Celebration Service  
11:15AM Foundations Class: Session 3 Wk4

#### MISSIONS

<http://www.lbac.org/missions>

#### GROWTH GROUPS

<http://www.lbac.org/gg>

Mid-week Bible Studies for all Adults

#### CHILDREN'S MINISTRIES

<http://www.lbac.org/children>

#### Sunday Mornings

Gospel Project @ 9:30AM  
Fun N Funky Hour @ 11:15AM

#### AWANA

<http://www.lbac.org/awana>

Wednesday Nights through May

#### YOUTH MINISTRIES

<http://www.lbac.org/youth>

JH & HS Foundations ~ Sundays @ 11:15AM  
The Process High School ~ Tuesdays @ 7:00PM  
Junior High Live ~ Thursdays @ 7:00PM

#### WOMEN'S MINISTRIES

<http://www.lbac.org/women>

Woman To Woman Mentoring  
Contact: sherylnnelbac@gmail.com

Lydia House Meals Ministry  
Contact: mcoliver789@msn.com

Women Connecting with Missions  
3rd Tuesday of each month @ 7:00PM

#### Crafty Women

2nd Saturday of each month @ 10:00AM

#### MEN'S MINISTRIES

<http://www.lbac.org/men>

Contact: mensministry@lbac.org

Regular Ministry Schedule & Contacts

## long beach alliance church offices

3331 palo verde avenue • long beach, ca • 90808-4113

phone: 562.420.1478 • office@lbac.org • www.lbac.org

church office hours: tuesday-thursday, 10:00AM-5:00PM

[www.facebook.com/longbeachalliancechurch](http://www.facebook.com/longbeachalliancechurch)

## church staff team

meghan brearley, children's director  
562.708.9261 • megan@lbac.org

jesse duckett, youth pastor  
562.454.7122 • jesse@lbac.org

tina rand, receptionist & treasurer  
562.420.1478 • tina@lbac.org

scott trickett, associate pastor  
562.972.5306 • scott@lbac.org

michelle crammer, office manager  
917.288.3424 • michelle@lbac.org

chris lankford, lead pastor  
562.685.4132 • chris@lbac.org

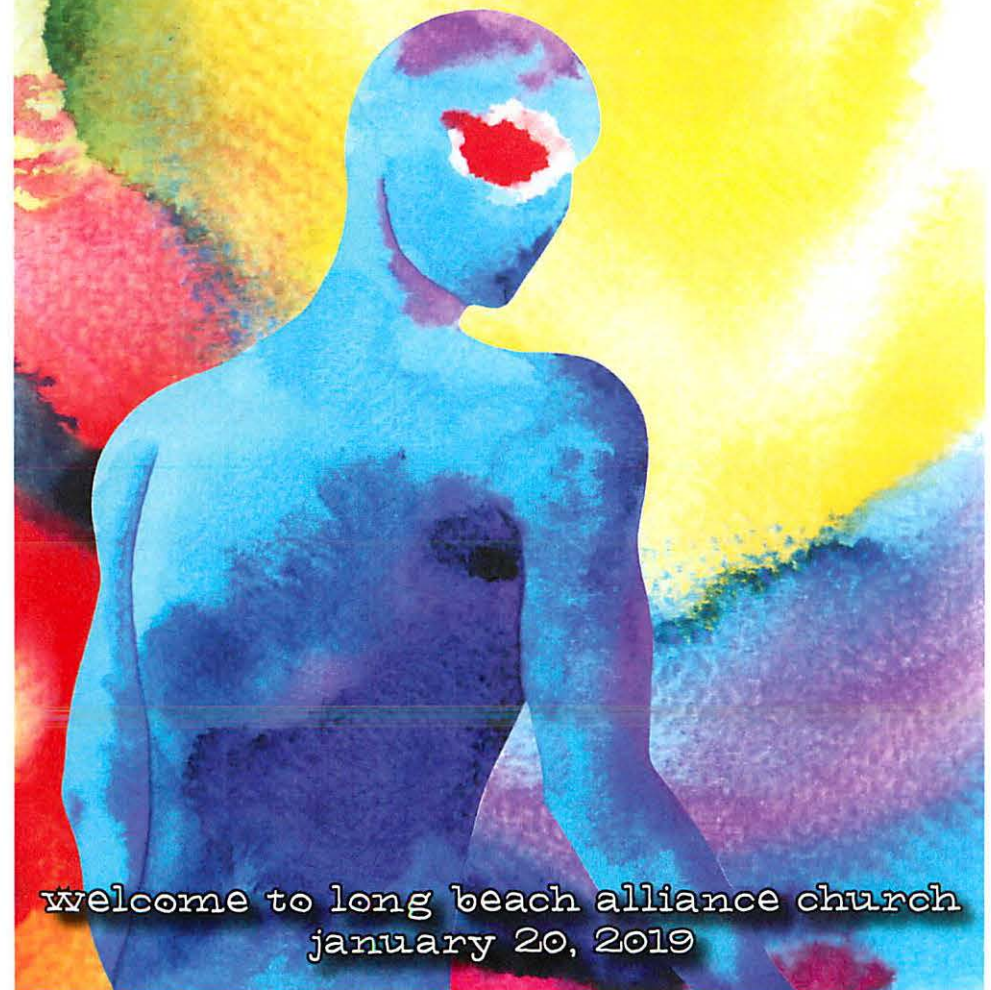
kyle rand, facility needs  
562.900.0921 • kyle@lbac.org

ben shaw, worship & celebration intern  
562.420.1478 • ben@lbac.org



THE  
ALLIANCE

hope in the  
good news  
of Jesus



welcome to long beach alliance church  
january 20, 2019





**Growth Groups Begin This Week!**

**January 20, 2019**

Sign up online, [www.lbac.org](http://www.lbac.org),  
or contact the church office  
for more information!

Growth Groups are mid-week small groups in local homes  
for adults who meet together for great discussions, growing  
friendships, and more! **JOIN ONE TODAY!**

**DONOR STATEMENTS  
ARE PREPARED!**



**See Luke Schaub Today in Courtyard!**

**MEN'S MINISTRY**

**BIG GAME  
Party**

**FEBRUARY 3 AT 3:30PM**

**CRAIG HOOPER'S HOME  
3142 MAINWAY DR LOS ALAMITOS**

Call Craig for more info: 562.421.4214



**Have you seen it?**

**The  
Gym  
Projector?**

If you know the whereabouts of the missing projector,  
please let us know or simply return it to the church office (no questions asked)!

**HELP!**



**Sunday  
Greeters & Ushers  
Needed**



Fill out a Connect Card or call the Office to sign up

**LBAC Year-to-Date Financial Report**

	<u>Budget</u>	<u>Received</u>	<u>Budget %</u>
Weekly:	\$11,977.03	\$10,664.52	89.0%
Month-to-Date:	\$23,954.06	\$16,183.64	67.6%
Year-to-Date:	\$239,540.60	\$236,191.87	98.6%
Disbursed YTD:	\$207,558.00	GOF Balance: \$28,633.87	

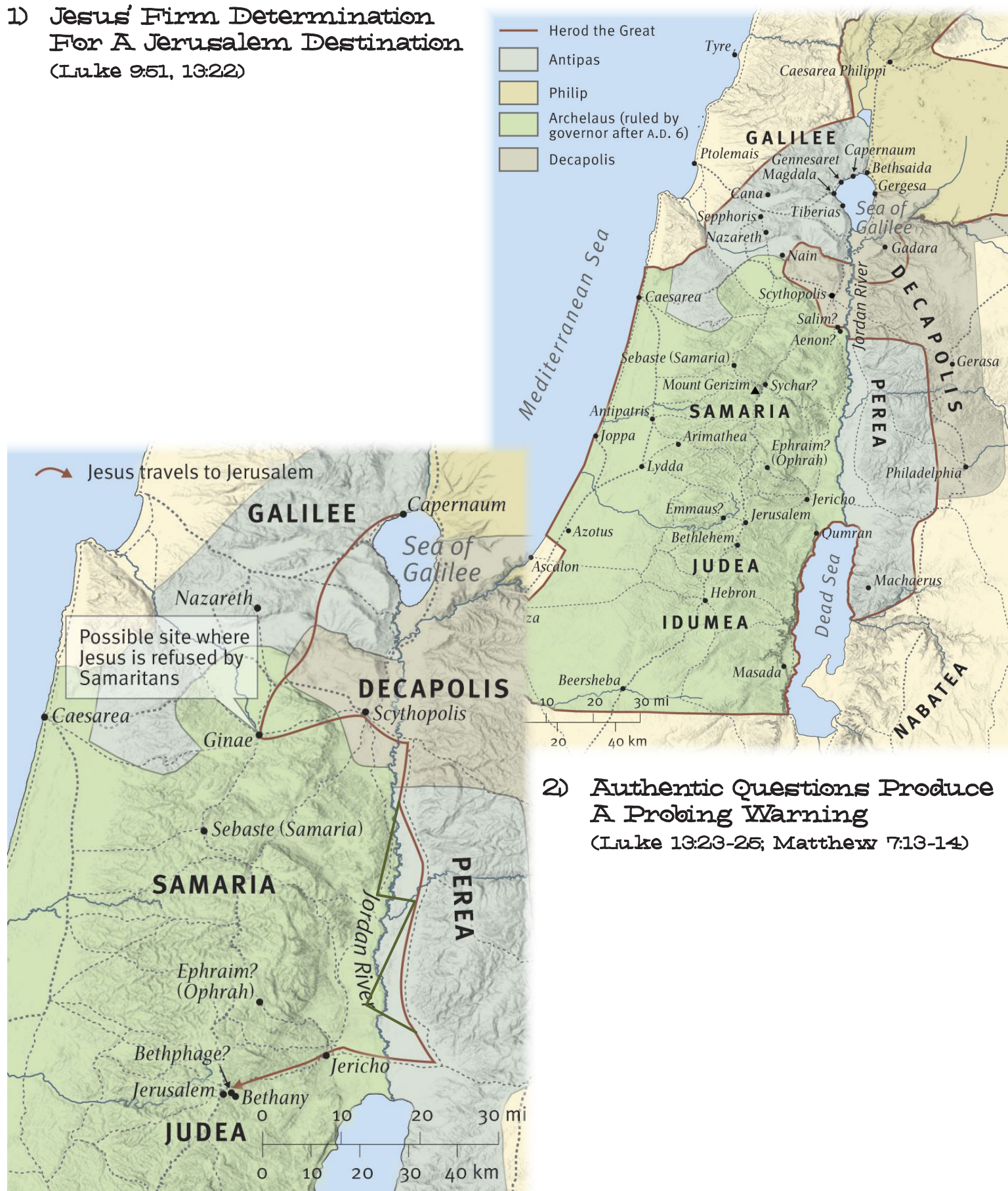


# Hope In The Good News of Jesus

Long Beach Alliance Church • January 20, 2019 • Pastor Chris Lankford

## Luke 13:22-35

### 1) Jesus' Firm Determination For A Jerusalem Destination (Luke 9:51, 13:22)



### 2) Authentic Questions Produce A Probing Warning (Luke 13:23-25; Matthew 7:13-14)

### 3) Gospel Inoculation through Religious Familiarity

(Luke 13:26-28)

### 4) Gospel Effectiveness through Response

(Luke 13:29-30)



—  
"IF YOU EXPOSE YOUR SIN,  
JESUS WILL COVER IT.  
IF YOU COVER YOUR SIN,  
HE WILL EXPOSE IT."  
—

J.D. GREER

### 5) Gospel Power Makes Jesus Spicy

(Luke 13:31-33)

### 6) Lament & Hope in the Gospel of God's Kingdom

(Luke 13:34-35; Matthew 23:37-39)



# Growth Group Guide

## Hope in the Good News of Jesus

Week #1 • Luke 13:22-35

### Ice Breaker

- Welcome back and welcome to 2019. Did you do anything noteworthy over the Christmas break? Do you have any big activities or events planned this year?

### In-Depth

- **Read Luke 13:22-35**
- **Discuss what you learned from this week's sermon**

1. Read Luke 13:23-24. Also read Matthew 7:13-14; Luke 9:23-24; 2 Timothy 4:7.  
In what ways is salvation hard to attain?

A. But isn't the gospel of grace (Ephesians 2:8-9) easy to attain? How do we reconcile these?

2. Read Luke 13:25-27. How is it possible for someone to think they are a Christian, but are not known by Jesus?

A. Give 2 or 3 examples of "gospels" that do not lead a person to Christ.

B. Read John 10:14; John 14:23; John 15:5; James 4:8; and Revelation 3:20.  
What does it mean to have a genuine relationship with Jesus?

3. Luke 13:29-30. Also read Matthew 8:10-13; Isaiah 2:2-4; Galatians 3:28; and Revelation 19:6-9.  
To what is Jesus referring in Luke 13:29-30?
4. Luke 13:34. Also read Ezekiel 33:11; Jeremiah 13:17; and Luke 15:7.  
Describe God's heart for the lost.

## Making It Relevant

1. How can we be assured we will never hear Jesus say "Depart from me. I do not know you?"
2. How can we more effectively share the true gospel rather than a too-easy gospel?
3. Do you share God's compassion for the lost?
4. What does "Jesus is Lord" mean to you? In what ways does having a "Lord" make you uncomfortable?
5. When speaking with someone who does not yet follow God, how do you explain what it means to have a personal relationship with Jesus?