



welcome to long beach alliance church
a community of Jesus followers who
love God, love others, & serve the world



WALL OF HONOR
WE NEED PICTURES!
IF YOU OR SOMEONE YOU LOVE HAS SERVED, OR IS CURRENTLY SERVING, IN THE
U.S. ARMED FORCES, PLEASE SEND AN 8X10 OR .JPG PICTURE (PREFERABLY IN
UNIFORM) TO THE CHURCH OFFICE FOR OUR LBAC WALL OF HONOR
THANK YOU FOR YOUR SERVICE

Annual Meeting **TODAY!** Annual Meeting

Lunch @ 12:00PM Meeting @ 1:00PM

Hope to see you there!

HUME OCTOBER 2017
MEN'S RETREAT 19-22

Sign up in the Courtyard today or with
Mike Comstock comstock7@verizon.net



LBAC Year-to-Date Financial Report

Budget	Required	Received	Budget %
Weekly:	\$12,041.97	\$14,032.93	116.5%
Month-to-Date:	\$12,041.97	\$14,032.93	116.5%
Year-to-Date:	\$60,209.85	\$53,116.29	88.2%
Disbursed YTD: \$52,146.36		GOF Balance: \$969.93	

LBAC's Family Calendar & Events

Sunday, October 8

- 9:00AM Morning Coffee
- 9:30AM Worship & Celebration Service
- 11:15AM Foundations Hour
- 12:00PM Fellowship Lunch
- 12:45PM Annual Business Mtg Childcare Opens
- 1:00PM Annual Business Meeting

Monday, October 9

- 6:00PM Compulsive Eaters Anonymous

Tuesday, October 10

- 7:00 PM High School Youth Group
- 7:00PM Governing Board Meeting

Wednesday, October 11

- 6:30PM AWANA

Thursday, October 12

- 7:00PM Junior High Youth Group

Friday, October 13

- 6:30AM Men's Bible Study
- 8:00PM Narcotics Anonymous

Saturday, October 14

- 9:00AM Deaconess Meeting
- 9:00AM Compulsive Eaters Anonymous
- 10:00AM Crafty Women

Sunday, October 15

- 9:00AM Morning Coffee
- 9:30AM Worship & Celebration Service
- 11:15AM Foundations Hour
- 12:15PM Deacon Meeting
- 7:00PM Youth Leader Meeting

MISSIONS

<http://www.lbac.org/missions>

GROWTH GROUPS

<http://www.lbac.org/gg>

Mid-week Bible Studies for all Adults

CHILDREN'S MINISTRIES

<http://www.lbac.org/children>

Sunday Mornings

Gospel Project @ 9:30AM

Fun-N-Funky Hour @ 11:15AM

AWANA

<http://www.lbac.org/awana>

Wednesdays through May 6:30PM-8:30PM

YOUTH MINISTRIES

<http://www.lbac.org/youth>

JH & HS Foundations ~ Sundays @ 11:15AM

HS Core Groups ~ Tuesdays @ 7:00PM

JH Core Groups ~ Thursdays @ 7:00PM

WOMEN'S MINISTRIES

<http://www.lbac.org/women>

Woman To Woman Mentoring

Contact: sherylynnlbac@gmail.com

Lydia House Meals Ministry

Contact: robbi@apabrando.com

Women Connecting with Missions

3rd Tuesday of each month @ 7:00PM

Crafty Women

2nd Saturday of each month @ 10:00AM

MEN'S MINISTRIES

<http://www.lbac.org/men>

Contact: mensministry@lbac.org

long beach alliance church offices

3331 palo verde avenue • long beach, ca • 90808-4113
phone: 562.420.1478 • office@lbac.org • www.lbac.org
www.facebook.com/longbeachalliancechurch
church office hours: tuesday-friday, 12NOON-5:00PM

church staff team

michelle crammer, office manager
ext. 1004 • michelle@lbac.org

jesse duckett, youth pastor
ext. 1005 • jesse@lbac.org

tina rand, receptionist & treasurer
ext. 1006 • tina@lbac.org

matt swaney, family ministry pastor
ext. 1003 • matt@lbac.org

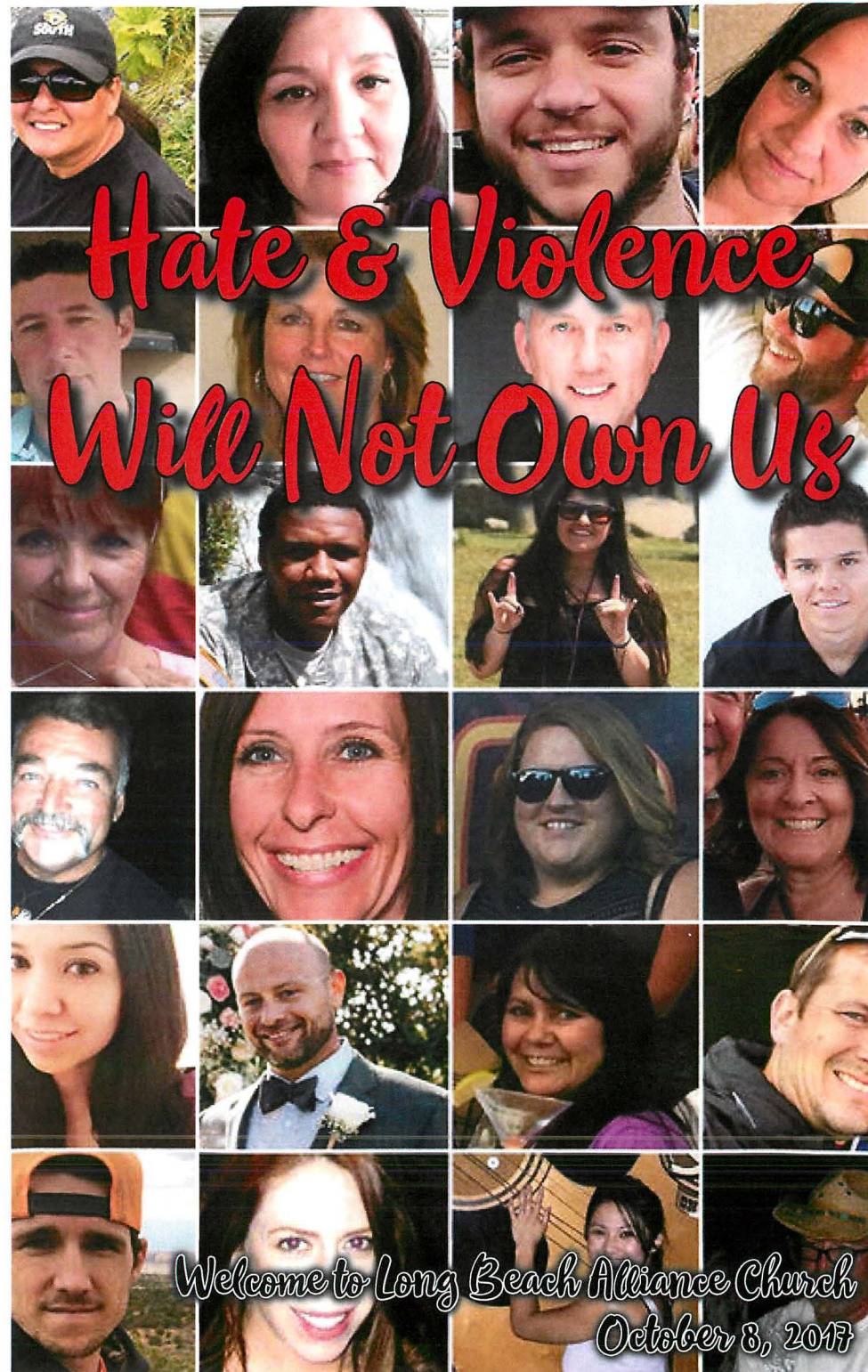
kelly douglas, envision france missionary
kelly@lbac.org

chris lankford, lead pastor
ext. 1001 • chris@lbac.org

ben shaw, worship & celebration intern
ben@lbac.org

scott trickett, associate pastor
ext. 1002 • scott@lbac.org

Regular Ministry Schedule & Contacts



Weekly Schedule



THE
ALLIANCE

Hate & Violence Will Not Own Us

LONG BEACH ALLIANCE CHURCH - OCTOBER 8, 2017 - PASTOR CHRIS LANKFORD

1) Responding To Powerlessness

- Psalm 44:23-26

Experiencing Undeserved or Inexplicable Evil Produces Pain, Terror, and Fear

Human Responses To Pain, Terror, and Fear Are Faith-Revealing

2) There Is Nothing Quite Like The Gospel

- 1 Peter 1:3-7

There Is Nothing Quite Like The Gospel Because There Is No One Quite Like Jesus

- 1 Corinthians 15:54b-58

The Power Of The Gospel Comes From Jesus' Resurrection From Death

3) Follower Of Christ, This Is Your Moment!

- Colossians 1:27

Christ Is Alive In You, Display The Hope Of Glory In The Face Of Pain, Terror, and Fear

Growth Group Guide

Ice Breaker

- When you encounter stories of tremendous human tragedy, what kinds of responses do you have? How do the people around you respond?

Group Discussion

- *Discuss what you learned from this week's sermon.*

1. Why do bad things happen to good people? Why do good things happen to bad people? Does following Christ make any difference in what happens to you before Heaven?
2. Many people ask "Where was God?!" when natural disasters or human tragedies occur. If God is truly loving, how can He remain passive in the face of terrible natural disasters, genocides, and/or other evil acts against humanity to occur?
3. If God created all things, is He the source of evil? If so, how can God be both perfect and the source of evil simultaneously? If not, how can evil exist if God did not create evil?
4. Read Romans 12:14-15, Psalm 44:23-26, and James 1:2-4. What are some helpful ways to show those around you how to handle tragedy? What are some unhelpful ways?
5. In his outline from Sunday, Pastor Chris wrote "follower of Christ, this is your moment!" in response to the recent tragic events in our world. What are some biblical connections between suffering and faith in Jesus Christ?
6. If someone asked you to show them God's response to human tragedy in the Bible, what story or teaching in the Bible would you read to them?